



**KEEP IT
BEAUTIFUL**



April 11, 2025

Mission and Vision

The **mission** of the **Keep Cass County Beautiful Program** is to inspire and educate individuals to take daily actions to improve and beautify their community environment.

The **vision** of the **Keep Cass County Beautiful Program** is to create a community where everyone enjoys a clean, green and beautiful place to live, work and play.

Want to see our great work - like us on Facebook - let others know too!



THANK YOU TO ALL OUR MEMBERS

**WITH YOUR SUPPORT WE CAN CONTINUE TO
KEEP CASS COUNTY BEAUTIFUL**

Visit our webpage - www.keepcasscountybeautiful.com to learn more about us or click the link below to sign up:

[Click here to become a member or volunteer:](#)



Did you know?

Latex paint is not considered a Household Hazardous Waste?

You can dispose of it in your regular trash pick up after you harden it.

Below is a link to a video on how to properly harden and dispose of paint.

But better yet, if it's still usable, use it for an outdoor project, craft or give it away to a friend, neighbor or someone who can use it.

Think reuse before disposal.

[Click here:](#)



HOW TO SOLIDIFY OLD PAINT

You have some old paint lying around that's taking up space and you don't know what to do with it.

You should know that throwing the paint away in the sink, ground or garbage isn't the best solution and could, in fact, be hazardous to both your health and the environment.

You can take steps to properly dispose of the paint once it is in a SOLID state.

Start with a bucket or can only 2/3 to 1/2 full of unwanted paint. Mix saw dust or cat litter into the paint.

Stir with a stick until well blended.

(Alternatively, you can use a commercially made paint hardener, purchased from a paint or hardware store)

Add more sawdust or litter as necessary, until the consistency of the mixture is crumbly.

You will need about as much absorbent material as there is paint. Be sure there is no unmixed paint in the bottom of the can.

Leave the paint to dry for several days, until it does not spill out of the bucket when tipped over.

NEVER mix unwanted latex and oil based paint together!
Now you can properly dispose of your un-lidded dry paint.

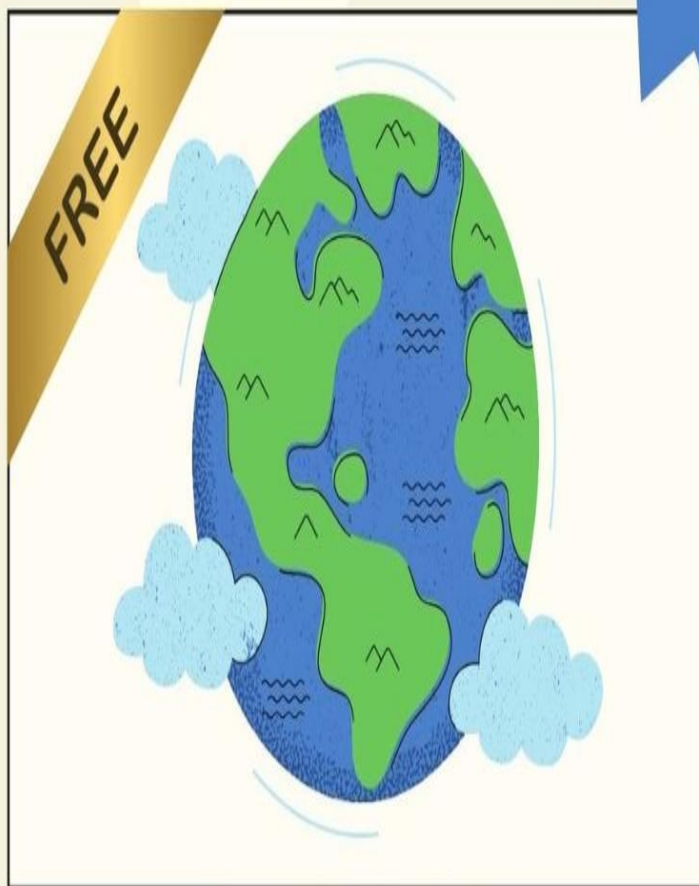


Mark your calendars and come join us for a free morning of fun!

Join Keep Cass County Beautiful for our

EARTH DAY EVENT

ENTER TO WIN
FREE A TREE!



APRIL 26, 2025

9:00-12:00

BEHIND CITIZEN'S BANK



Recycle tip of the day!

Did you know?

Not all cardboard is recyclable.

Like this carton here.

It is a multi layer package, which has plastic in it so be sure to check the item before placing in the recycle bin.

Never “wishcycle”



Volunteers needed for our upcoming event! Let us know
if you'd like to help!



Volunteers Needed

Volunteers needed to work- craft and
welcome booths, sort recycling,
& set up and tear down



**Thank you to all our supporters !
We look forward to another great year**



A big thank you to our 2024 supporting partners and members!

Sustaining

OPPD Papillion Sanitation Hillside Solutions composting Village of Eagle
Roger and Linda Behrns Black Hills Energy Nutrien Ash Grove

Diamond

City of Louisville Village of Cedar Creek Linder Lakes

Platinum

Village of Murray Village of Union Plattsmouth Animal Hospital
Roger & Linda Behrns City of Weeping Water Sean Gillen
Doug Finch Fred Eriksen Frontier Cooperative

Witte Physical Therapy Makovicka Physical Therapy

Al and Barb Dietrich

Gold

Nebraska Realty Raymond and Lucy Lorence Pinnacle Bank
American Exchange Bank Janet McCartney Frontier Cooperative
Beaver Lake Association Stock Seed Farms Murdock T.E.A.M.
Citizens State Bank 3B Homestead, Murdock Village of Elmwood
First State Bank SCC Learning Center of Plattsmouth Village of Manley
Julie and Steve Dodd Midwest Insurance Exchange The Junktion, Union

Silver



The background of the infographic is a dark green color, overlaid with various food scraps and peels, including what appears to be a banana peel, a slice of orange, and other vegetable scraps. The text is presented in three orange rounded rectangular boxes. The entire graphic is framed by a light green border.

Food Waste Facts

In the U.S. 30-40% of the food supply ends up being wasted

Most food waste in the supply chain occurs at the consumer level

To reduce food waste make sure you plan meals, store food properly, use leftovers creatively, and compost food scraps

The weather is already warming up to allow for litter cleanups!
Let's get a jump start on cleaning up Cass County to make it the most beautiful county in Nebraska!

All litter cleanup supplies provided.

Potential funding provided to groups for fundraisers.

We encourage recycling all that can potentially be recycled as well to reduce landfill waste.

WANT TO HELP CLEAN UP OUR COMMUNITY?

DO YOU NEED SERVICE HOURS?

WE CAN HELP...



Pretty but problematic!

The ornamental pear tree (*Pyrus calleryana*) (AKA *Bradford/Callery*) may look lovely, but it's spreading into natural areas and becoming invasive.

Here's how you can help:

Skip planting ornamental pears (fruit-bearing trees are fine!).

Try alternatives like crabapple, redbud, dogwood, or serviceberry—beautiful and better for our ecosystems.

Let's protect our native landscapes



KCCB is celebrating it's 13th year in Cass County and we want others to be aware of all we do and offer in the community!

Can you share our page and help us get more followers?

Together, we grow and Keep Cass County Beautiful for
our future.



Like what we do? Share
it with others! Help us
get to 1,000 likes!

WE WILL HAVE A DRAWING FOR A
POLLINATOR BASKET WHEN WE HIT
1,000 LIKES!

A big thanks to Murray Presbyterian Church for cleaning up their 2.5 mile stretch of HWY1 today! An entire truck was filled (as usual) and it looks so much better now. MPC knows stewardship of our earth is important and has been cleaning up this stretch for 4 years now.



Our first 2025 recycling collection of the year!

We have added new items allowed every year and almost everything is **FREE** to bring to us!

Save your items, reduce your landfill waste, together, we can **Keep Cass County Beautiful** and make it the more beautiful county in Nebraska.

Keep Cass County Beautiful Electronics, glass & more Recycling Event

April 19, 2025- Weeping Water- 503 West H. St.
Enter at west ballfield entrance
9 a.m. - Noon

Bring any electronics, large & small appliances, equipment or metals for recycling or refurbishing. **Limit of 2 large appliances per household.**

Cass County residents only; no commercial quantities.

Keep Cass County Beautiful will pay half of the recycling fee of 4 items per household. If you're a KCCB member, one item will be **FREE!**

The following items will have an Environmental Fee:
ONLY ITEMS with FEE: CRT (Cathode Ray Tube) Monitors
\$1.50 per inch All styles of Televisions (Flat screens FREE)
Fee is calculated by screen size & measured diagonally.
FREE this year! Lithium & bulk alkaline batteries

The following items will be collected at no charge:

Computers: Desktops, Laptops and Tablets;
Flat Screen Computer Monitors; Key Boards & Mice;
Network Equipment, Servers, Modems;
Small Copiers, Printers, Fax Machines;



All data is securely erased.

Our Director **Dana Stahl** will be speaking at this event.

There will be two parts to this event - the first part she will be discussing what Keep Cass County Beautiful is doing as an organization.

The second part will be - Waste- my personal journey of going zero waste - learning zero waste and sustainability.



Present:

Zero Waste 101

Tuesday, May 13th

6:00PM

VIA ZOOM



Save the Date:

More information to come



Save The Date
GARDEN WALK

Plattsmouth, Nebraska

June 28, 2025 9 am - 2 pm

Hosted by Plattsmouth Garden Club & Keep Cass County Beautiful

More details coming soon!

www.plattsmouthgardenclub.net

www.facebook.com/groups/plattsmouthgardenclub



Mark your calendars!!!

Community Shred Day

Saturday, May 10th, 2025

9:00 - 11:00 am

2020 West 8th Ave Parking Lot

Bring in documents that contain any identifying information, such as old checkbooks,

What Happens if we don't Recycle?

See this edition of:

"What happens if we don't Recycle"

What happens if we don't recycle that plastic?



Most plastics are recyclable.

Much depends on what the plastic is used for and what type of material it contains.

PET (1) is mostly used for beverage and water bottles.

HDPE (2) is used for milk jugs and various liquids, such as cooking oil and washing detergents.

Polyvinyl Chloride-PVC (3) is used to make cling wrap, dry erase boards, signs, and other items.

LDPE (4) is used for plastic bags for bread, shopping and dry cleaning bags, etc.

Polypropylene-PP (5) is used for food containers, such as sour cream, ketchup, bottle caps, etc.

Polystyrene-PS (6) is often a foam product that's used for coffee cups, packaging, knives, forks, spoons, and other items.

Polycarbonate and polylactide (7) used for medical devices, or in electrical and electronics, are seldom recycled.

Number of Years To Breakdown Plastics

In a landfill, **PET can take 10 years** to degrade and decompose, it can take up to 50 years to fully degrade.

This process could occur faster if plastic is exposed to light.

The toxic chemicals in plastic interact with water and leach into the ground and pollute groundwater reservoirs harming wildlife and people.

Plastic uses bisphenol A (BPA), a carcinogen, and more recently bisphenol S (BPS) and bisphenol F (BPF) as hardening agents.

Other chemicals are added as flame-retardants or coloring agents, all of which affect hormone activity.

The largest impact has been on marine ecosystems, with **10% of all plastic** produced ending up in the oceans.

Plastic is very 'mobile' given its low density and light weight, and items from illegal litters, dumps, and landfills blow over to streams and rivers, and is carried to oceans or is washed up on beaches.

The **Great Pacific Ocean Garbage Patch** is larger than the state of Texas. There are four large gyres in the Atlantic and Indian Oceans, too.

The other kinds of plastics are heavy and sink to ocean floors.

Thousands of animals from small finches to great white sharks are killed as they get entangled in discarded fishing nets.

Three hundred species of animals ingest plastic mistaking it for food; for example sea-turtles mistake bellowing plastic for jellyfish.

Nearly 100,000 animals die every year; some starve to death as plastics fill their bellies and there is no place left for food.

Others are affected by the toxic elements added to plastic.

Plastic breaks down into **micro-plastics** rapidly, though it takes a long time to decompose completely.

Because of the size, even small insects eat micro-plastic.

Once ingested by small animals, plastic can find its way to people's tables by a process called bioaccumulation.

When animals are eaten by bigger predatory fish and other sea-life, plastics, and the chemicals in them, get more concentrated as they move up the food-chain.

Up to **67% of edible species** of seafood, and 25% of catch in the US has plastic in them.

These items are OK in your recycling container

*Plastic bottles, jugs and jars 6 ounces or larger, any container with a threaded neck (for a screw-on lid) or neck narrower than the base. This includes milk jugs, peanut butter jars, and bottles that held personal care and cleaning products (shampoo, laundry soap, etc.).

*Round plastic containers that can hold 6 ounces or more, with a wider rim than base, and typically contain products such as salsa, margarine, cottage cheese, hummus, etc. (no drink cups).

*Planting/nursery pots larger than 4 inches in diameter and made of rigid (rather than crinkly or flexible) plastic. Remove any loose dirt.

*Buckets 5 gallons or smaller.

Do not include these items in your recycling container

***Plastic bags.** They are recyclable, but not at the curb. Plastic bags are a serious problem for recycling facilities. They get caught in machinery, which causes costly shut-downs of sorting lines to cut the bags out of the equipment.

Take plastic bags back to stores or drop them off at **recycling centers** where they are collected separately from other plastics.

*Bottles that have contained **hazardous materials** such as motor oil, pesticides, herbicides. Bottles that have contained cleaning products are OK.

*Lids. They are too small or too flat to be sorted out of recyclables and usually end up at paper mills where they contaminate the paper. These items are garbage.

*Trays from microwaveable meals, deli products, prepackaged meals and snacks. Take-out, deli or other food containers that are not specifically round plastic containers, including hinged containers, square snack containers, food containers with a plastic pull-tab, bowls, etc. These items are garbage.

***Styrofoam** or other foam products (cups, meat trays, egg cartons, packaging foam, packing peanuts, etc.).

*Plastic or plastic-coated beverage cups, lids or straws. These are garbage at home.

***Plastic packaging** that doesn't conform to the bottle, jar, bucket or round container shapes, such as blister packaging or plastic wrap (stretch or shrink wrap, bubble wrap and bags), or containers smaller than 6 ounces.

Keep Cass County Beautiful | 10225 12th Street | Murray, NE 68409 US

[Unsubscribe](#) | [Update Profile](#) | [Constant Contact Data Notice](#)



Try email marketing for free today!